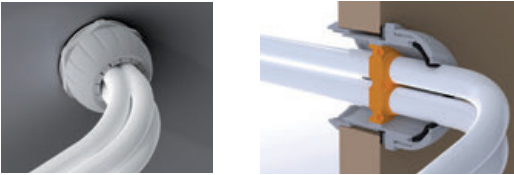


SCANSTRUT

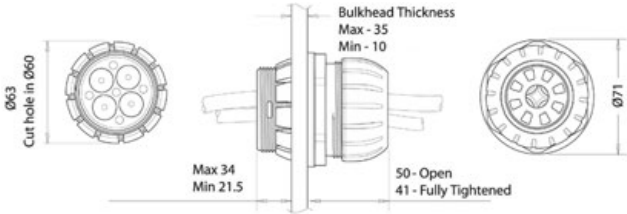


Watertight bulkhead fairlead for large cables

IP67

To let cables through bulkheads. High-resistance moulded nylon with inside overmoulded seal. Easy to install.

Code	Material	Ø mm	For cables
14.175.04	Plastic	71	Up to 4 cables, 7- to 15-mm Ø
14.175.10	Plastic	71	Up to 10 cables, 5- to 7-mm Ø



Fairlead gland

Made of watertight nylon, for electric cables.

Code	Base Ø mm	Overhang mm	For cables mm
14.185.95	48	33	5-8
14.185.96	51	36	7-12



▲ 14.186.02




▲ 14.186.00/01/03



▲ Individual packages

Fairlead gland to be fitted under the deck

Made of chromed brass, for cables to be fitted under the deck.

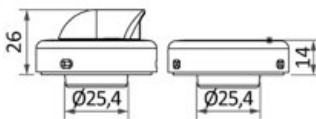
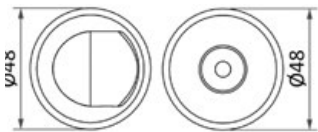
Code	Passage mm	 ORDER BY BOX
14.186.01	6	10
14.186.00	8	10
14.186.03	10	10
14.186.02	12	1



▲ 14.186.14



▲ 14.186.15



Fairlead/gland made of nylon, fiberglass and stainless steel

They ensure perfect watertightness (IP67) for cable passing. They allow the cables to pass without disassembling end connectors, if any. Fiberglass-reinforced nylon body with AISI316 stainless steel plug.

Code	Ø base	Overhang mm	Ø cable diameter mm	Cable assembly
14.186.14	48	14	3-14	vertical (in line)
14.186.15	48	14	3-8	lateral (@ 90°)

Elbow outlet

AISI 316

Code 14.481.92

Made of polished AISI 316 stainless steel, designed for electrical cables, from mast base to inside cabin.

