



## 7. Hardware

### Genoa T-Track Cars

T-Track is widely used on cruising boats where car sheeting positions change frequently.

All Lewmar Track cars fit the industry standard 32mm (1 1/4"). The cars are available in three styles and cover three different loading levels to suit boats from 9m (30ft) up to 15.5m (50ft).

- Precision Workmanship
- Three Styles
- Simple to fit
- Low Maintenance



#### Genoa Plunger Car



PART NO	SIZE	WORKING LOAD LIMIT		LENGTH		WIDTH		WEIGHT	
		kg	lb	mm	in	mm	in	g	oz
29041700	1	900	1980	111	4 3/8	56	2 1/4	540	19.1
29042700	2	1500	3300	120	4 11/16	56	2 1/4	719	25.3
29043702	3	2350	5170	170	6 3/4	56	2 1/4	1199	47.3

#### Car with Shackle and Plunger



PART NO	SIZE	WORKING LOAD LIMIT		LENGTH		WIDTH		WEIGHT	
		kg	lb	mm	in	mm	in	g	oz
29172117	2	1500	3300	120	4 11/16	56	2 1/4	480	17.0

#### Tri-Roller Genoa Car



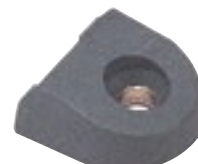
PART NO	SIZE	WORKING LOAD LIMIT		LENGTH		WIDTH		WEIGHT	
		kg	lb	mm	in	mm	in	g	oz
29442705	2	1500	3300	147	5 3/4	64	2 1/2	767	27.1

#### Control Line End Stop



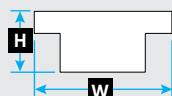
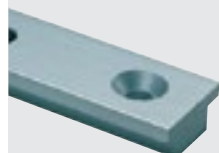
PART NO	WEIGHT	
	g	oz
29172015	120	4.2

#### Track End Stop



PART NO	WEIGHT	
	g	oz
29172016	19	0.7

### T-Track Specification



PART NO	NOMINAL LENGTH		<b>H</b> HEIGHT		<b>W</b> WIDTH		WEIGHT (PER METRE)		CENTRE HOLE		FIXINGS	
	m	ft	mm	in	mm	in	mm	in	g	oz	Metric	Imperial
29166215	1.5	4'11"										
29166225	2.5	8'2"	15	5/8	32	1 1/4	865	30.5	100	3 15/16	CSK M8	5/16"
29166230	3.0	9'10"										