

NOTE: For proper operation motor must rotate counterclockwise when viewed from pump end.

Electrical Installation Checklist

- v Separate circuit from power source
- v Proper size momentary switch mounted near pump
- v Proper wire size to length
- v Proper fuse size and type
- v Insulated wire connectors

Plumbing Connections

Pump should be mounted as near as possible to tank to minimize dry run. Pump is more efficient if mounted near the holding tank. Installations should be done by qualified marine tech.

INLET: Always install pump with a shut-off valve between pump and holding tank.

Hose: Use 1-1/2" ID(non- collapsible vacuum rated) hose on inlet (suction) side. Use stainless steel hose clamps on all sanitation connections.

Flange: To mount to 1-1/2" female flange, inlet barb must be cut off just before threads. Seal threads and hand tighten.

Warning: Any air leak on inlet side can cause pump to run dry and can damage impeller and impeller housing. Check all inlet side connections, even those on deck plates. All runs should be smooth with no kinks or sharp angles.

OUTLET: USE 1" or 1.88" ID hose on discharge side of pump. Connect to thru-hull fitting above highest heeled point above waterline. Vented loop installations must vent at least 10" above highest heeled point above waterline. Use stainless steel hose clamps on all sanitation connections.

INTERMITTENT DUTY ONLY!

Operation:

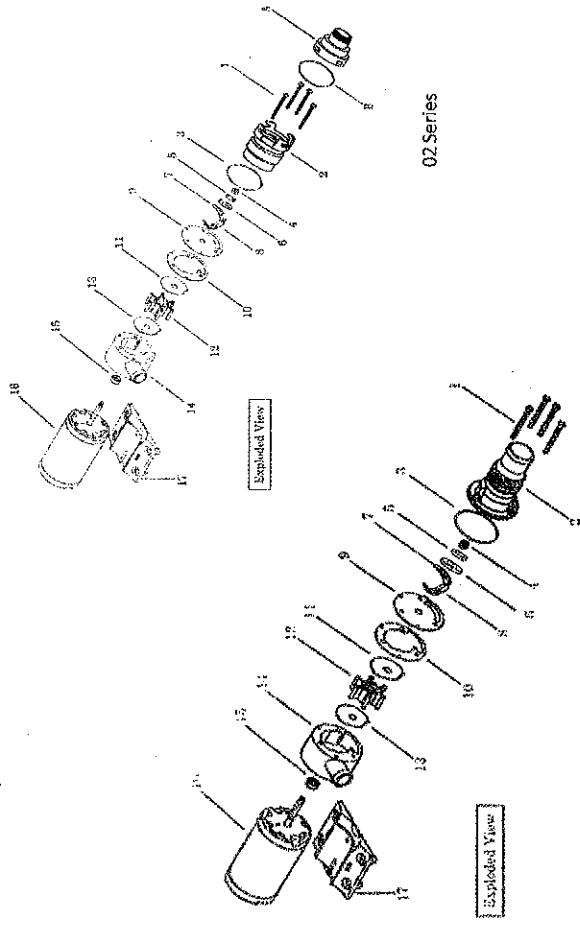
Pump switch must be near pump and tank so operator can hear pump running. Make sure shut-off valve to pump and dump valve (if equipped) are both open. Turn on momentary switch and pump out tank. When tank is empty, pump will get louder with a high pitch sound. Immediately turn pump off, or damage to impeller and housing will occur. Do not run pump dry for more than 15-20 seconds. Flush tank and pump with water after each use. This macerator will handle normal waste, tissues, cigarettes, fish scales, etc. it is not designed to handle large hard objects such as large bones or fruit pits.

Periodic Maintenance and Storage:

Flush with water after each use. Check wire connections occasionally. After periods of non-use, impeller can stick. To loosen, open rear shaft cover and turn motor shaft clockwise with a flat tip screwdriver. then replace shaft cover. For extended periods of non-use, pump impeller can be lubricated by running a small amount of mineral oil through holding tank system.

Part and Kit Lists

Item	Description	Qty
A	Inlet connector	1
B	O-Ring	1
1	Cover Screw	4
2	Cutter Housing	1
3	O-Ring	1
4	Hex Nut	1
5	Stainless spring washer	1
6	Stainless washer	1
7	Top Cutter Blade	1
8	Bottom Cutter Blade	1
9	Top water Plate	1
10	Gasket	1
11	Top Wear Plate	1
12	Impeller	1
13	Bottom Wear Plate	1
14	Impeller Housing	1
15	Oil seal	1
16	Motor Assembly	1
17	Baseplate Assembly	1



01 Series

02 Series